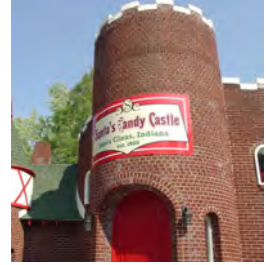


2019 GROUP INFORMATION

SANTA CLAUS, INDIANA
AND
LINCOLN'S INDIANA BOYHOOD HOME



Spencer County Visitors Bureau

INDIANASABELINCOLN.ORG

SANTACLUSIND.ORG



Updated 4/2/19



GROUP TOUR INDEX

| | Page # |
|---|---------------|
| Welcome | 5 |
| Resources | 7 |
| Hours | 9 |
| Getting Here | 11 |
| Santa Claus, Indiana - Fact Sheet | 13-14 |
| Lincoln's Indiana Boyhood Home - Fact Sheet | 15-16 |
| Attractions - Santa Claus | 17-25 |
| Attractions - Lincoln | 26-30 |
| Attractions - Other | 31-34 |
| Shopping | 35-37 |
| Dining | 38 |
| Lodging | 39-47 |
| Local Maps | 49-51 |
| Family Fall-O-Weekends | 52-53 |
| Santa Claus Christmas Celebration | 54-55 |



(888) 444-9252

SantaClausInd.org

IndianasAbeLincoln.org

WELCOME



SantaClausInd.org

Santa Claus is a magical and historical destination! Thousands of letters to Santa pile into this small, charming town annually.



[SantaClausIndiana](https://www.facebook.com/SantaClausIndiana)
[IndianasAbe](https://www.facebook.com/IndianasAbe)



[SantaClausInd](https://www.instagram.com/SantaClausInd)
[IndianasAbe](https://www.instagram.com/IndianasAbe)



[SantaClausInd](https://www.youtube.com/SantaClausInd)
[IndianasAbe](https://www.youtube.com/IndianasAbe)



Lincoln's
Indiana Boyhood Home

IndianasAbeLincoln.org

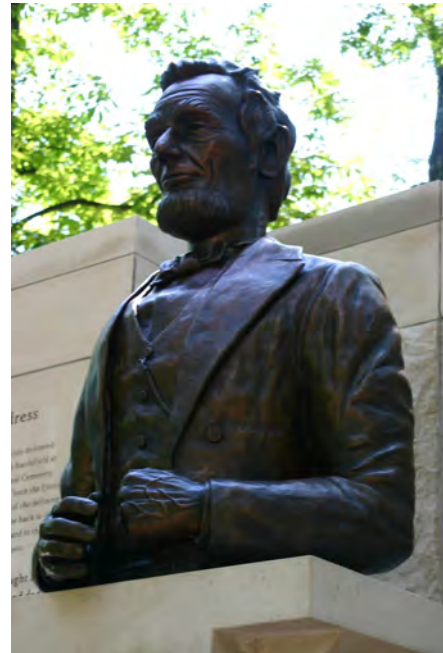
Ever wonder what Abraham Lincoln did as a child? Find out at sites throughout Lincoln's Indiana Boyhood Home, where Abe spent ages 7-21.



[SantaClausInd](https://twitter.com/SantaClausInd)
[IndianasAbe](https://twitter.com/IndianasAbe)



[SantaClausInd](https://www.pinterest.com/SantaClausInd)
[IndianasAbe](https://www.pinterest.com/IndianasAbe)



RESOURCES



The Spencer County Visitors Bureau is here to help you with all of your group's needs. Below is a list of resources available upon request.

Promotional Materials

- Digital photos of the destination to promote a group tour, available via email or postal mail on a USB
- Videos to showcase the area
- Assistance with marketing copy points for printed material pertaining to scheduled tours

Pre-Scheduled Guide Services

- A warm welcome when group arrives in the area
- Step-on guides to educate the tour group about the area

FAM Tour Opportunities

- Familiarize group tour planners with area attractions during a FAM tour for scheduled overnight trips
 - Tour operator must plan to bring a group to stay at a local accommodation overnight
 - FAM tours require approval by the executive director

HOURS



**Stop in and see us
at the Visitors Bureau!**

39 North Kringle Place
Santa Claus, IN 47579

Monday - Friday: 8:00 am - 4:30 pm CT



Visit SantaClausInd.org/Monthly-Hours
to view current hours of operation for local
attractions and dining.



Meetings and Group Tour Contact:

Alexandra Brooks, Marketing Coordinator

Abrooks@SantaClausInd.org

(888) 444-9252

Please Note:
Spencer County operates on Central Time



FACT SHEET

Location

Santa Claus, Indiana, is located north of the Ohio River in southern Indiana, approximately seven miles south of Interstate 64 between Louisville, Kentucky, and Evansville, Indiana.

Themed Town

The famous town is home to the world's only post office with the Santa Claus name. The world's first theme park is also located in Santa Claus; Holiday World & Splashin' Safari (originally called Santa Claus Land) opened in 1946. Most of the businesses in Santa Claus have Christmas-themed names such as Santa's Lodge, Lake Rudolph Campground & RV Resort, the Santa Claus Christmas Store, Christmas Lake Golf Course, Santa's TOYS, and Holiday Foods. Many of the establishments display Christmas lights and decorations year round. Nearly all the streets in Santa Claus are holiday-themed as well: Christmas Boulevard, Candy Cane Lane, and Mistletoe Drive. There are over 20 Santa Claus statues located at various locations throughout the community.

Population

The town of Santa Claus was incorporated in 1967 with a town board of three members and a clerk-treasurer. The population of the town at that time was less than 50. Today, this rural community is the home to approximately 2,500 people. During the summer months, the number of visitors outnumbers the residents many times over.

Naming of Santa Claus

The original town of Santa Claus, Indiana, was called Santa Fee. However, upon learning there was already a town in Indiana with the similar name of Santa Fe, the townspeople had to come up with a new name in order to obtain a post office.

According to local legend, it was a cold December night when the townspeople gathered together in a small church to choose a new town name. A gust of wind blew open the church doors and the sound of sleigh bells could be heard. A child exclaimed that it must be Santa Claus and the townspeople decided the town would be called Santa Claus, Indiana. This name was officially accepted by the United States Post Office Department in 1856.

Early Development

In the mid-1930s Attorney Milton Harris coordinated a deal with the Curtiss Candy Company and built a castle-like building for selling candy to visitors to the town. He also built a factory where Santa sleighs were built. Several toy companies built small plants in Santa Claus where they manufactured and displayed toys. In 2006, Santa's Candy Castle was fully restored and re-opened to the public offering handmade confections and gourmet hot chocolate.

Original Santa Statue

Businessman Carl A. Barrett collected donations and opened a park with a large statue of Santa Claus in 1935. The statue, dedicated "to the children of the world" is 22 feet high. This landmark has a base in the shape of the star of Bethlehem, with its principal point showing the way east to the land of the Christmas story. In 2011, the statue was restored to its original condition.

39 North Kringle Place • P.O. Box 202
 Santa Claus, IN 47579
 (888) 444-9252





FACT SHEET

World's First Theme Park

On August 3, 1946, Evansville industrialist Louis J. Koch opened Santa Claus Land. This was the first theme park built in the world. (Disneyland opened nine years later.) The original Santa Claus Land included the Santa Claus Land Train, toy displays, a food and souvenir shop, plus a special place to visit Santa Claus. In 1984, additional holiday-themed sections were added including Halloween and Fourth of July and the park was renamed Holiday World. In 1993, Splashin' Safari water park was added. TripAdvisor.com has named it the nation's #1 Water Park. In 2006, the park expanded again adding a fourth holiday section, Thanksgiving. During the summer months, over 1 million guests visit the family parks, which have been repeatedly voted the World's Friendliest and Cleanest. The park is home to three of the world's top-rated wooden roller coasters: The Voyage, The Raven, and The Legend. The park is also home to the world's longest water coaster, the Mammoth. In 2015, the parks introduced the nation's first launched wing roller coaster, Thunderbird.

Santa Claus Post Office

In 1856, the U.S. Postal Department gave official notice that the community would have a post office. The Santa Claus Post Office is the only post office in the world with Santa's name. The Post Office offers a holiday picture postmark during the month of December that also attracts mail from all over the world. Over 400,000 pieces of mail go through the Santa Claus Post Office during the holidays.

Letters to Santa

Each year the town receives thousands of letters to Santa from children all over the world. The Santa Claus Museum & Village and a group of local volunteers called "Santa's Elves" answer letters sent to Santa. They make sure each child receives a reply from Santa Claus; in 2018 approximately 22,000 letters were answered. This tradition has been traced back as far as the 1920s.

Santa Claus Christmas Celebration

Experience traditional holiday events during the first three weekends of December such as Chestnuts Roasting on an Open Fire at Santa's Candy Castle and Christmas Dinner with Santa at Santa's Lodge. Drive through Lake Rudolph's 1.2-mile "Santa Claus Land of Lights" to learn the shining story of Rudolph and browse through the Santa Claus Arts & Crafts Show and shops around town.

Today

Santa Claus, Indiana, has wonderful themed attractions and shops that truly bring out the spirit of Christmas. The famed little town offers unique attractions, shopping, and festive lodging.

- [Christmas Lake Golf Course & Event Center](#)
- [Evergreen Boutique & Christmas Shop](#)
- [Frosty's Fun Center](#)
- [Gingerbread House](#)
- [Holiday Guest House Suites](#)
- [The Holiday House](#)
- [Holiday World & Splashin' Safari](#)
- [Lake Rudolph Campground & RV Resort](#)
- [Mistletoe Manor](#)
- [Santa Claus Christmas Store](#)
- [Santa Claus Christmas Store](#)
- [Santa Claus Museum & Village](#)
- [Santa Claus Post Office](#)
- [Santa's Candy Castle](#)
- [Santa's Lakeside Cottages](#)
- [Santa's Lodge & St. Nick's Restaurant](#)
- [Santa's Stables](#)
- [Santa's TOYS](#)

39 North Kringle Place • P.O. Box 202

Santa Claus, IN 47579

(888) 444-9252





FACT SHEET

Lincoln in Spencer County, Indiana

Years spent in Spencer County: 14 years; from age 7 to 21

Year moved to Spencer County: 1816

Why move to Spencer County? To own land free of title disputes and the taint of slavery. In Kentucky, Lincoln's Father Thomas lost land three times due to title flaws.

Year Lincolns left Spencer County, Indiana, for Illinois: 1830

Lincoln Family Members:

Mother, Nancy Hanks Lincoln died in 1818 of milk sickness, an illness caused from drinking milk from cows that consumed poisonous white snakeroot. Her gravesite can be found in Lincoln Boyhood National Memorial in Lincoln City, Indiana.

Father, Thomas Lincoln was a farmer and skilled carpenter. You can see a hutch made by Abraham Lincoln with the help of his father, Thomas, at the Lincoln Pioneer Village & Museum in Rockport, Indiana.

Sister, Sarah Lincoln Grigsby died during childbirth in 1828. She is buried at Lincoln State Park in Lincoln City, Indiana, along with her stillborn child and her husband, who passed away several years later.

Dennis Hanks is a cousin whose parents also died of milk sickness and who lived with Abraham Lincoln's family. He later owned property that is now part of Lincoln Pines Lakeside Resort.

Sara Bush Johnston is a widow with three children; she married Abraham Lincoln's father, Thomas, in 1819 in Elizabethtown, Kentucky, and returned with him to Spencer County, Indiana.

Significant Experiences in Lincoln's Spencer County Life:

- Lincoln attended log cabin schools, developed a love for reading, and a curiosity for knowledge.
- Lincoln won his first court case in Rockport, Indiana, while still a teenager. He represented himself in a dispute with a local ferry boat company. Lincoln would regularly ferry passengers out to meet passing steamboats and he soon got sued by the local ferry company which said he was infringing on their rights to ferry people across the river. Lincoln won his case by arguing that he wasn't taking people across the river...he was only going half way.
- In 1828, Lincoln embarked on a flatboat trip to deliver goods to New Orleans for local general store owner James Gentry, along with Gentry's son, Allen. It was in New Orleans where Lincoln witnessed a slave auction, influencing the anti-slavery views he promoted as president.

Lincoln Sites in Spencer County:

Colonel Jones Home, Gentryville, Indiana

This carefully restored 1834 Federal-design home was the home of the merchant employer of Abraham Lincoln. The home offers a look at the early development of Indiana and the life of Colonel William Jones, who was also a politician. Appointment required for home tours. Call (812) 937-4710 for more information.



FACT SHEET

Lincoln Boyhood National Memorial, Lincoln City, Indiana

Learn about the lives of Abraham Lincoln and his pioneer family, who lived on a farm site that is now a National Park. The story of the Civil War era president's 14 formative years in Indiana springs to life at the Living Historical Farm, inside the visitor center, throughout the museum, during the film, and along the park's scenic hiking trails. Call (812) 937-4541 or visit nps.gov/libo/index.htm for more information.

Lincoln Ferry Park, Troy, Indiana

This riverfront park is on the historic spot where Abraham Lincoln operated a ferry boat service taking travelers out to passing steamboats. The park features a stone picnic shelter. Located on the Ohio River Scenic Byway near Troy, Indiana.

Living Historical Farm, Lincoln City, Indiana

The Living Historical Farm is located on the grounds of the Lincoln Boyhood National Memorial in Lincoln City, Indiana, and is a working pioneer homestead with a cabin, outbuildings, split rail fences, animals, gardens, and field crops. From April through September, rangers in period clothing perform a variety of activities typical of the 1820s. Call (812) 937-4541 or visit nps.gov/libo/index.htm for more information.

Lincoln Landing, Rockport, Indiana

The riverfront under the bluff in Rockport, Indiana, is rich with history and includes the site where Abraham Lincoln launched a flatboat to transport produce to New Orleans for a local merchant in 1828.

Lincoln Pioneer Village & Museum, Rockport, Indiana

The Lincoln Pioneer Village & Museum houses hundreds of fascinating artifacts from the area's historic past, including a hutch made by Abraham Lincoln with the help of his father, Thomas. Take a relaxing look back into history with 13 Lincoln-era replica cabins. This site was originally a W.P.A. project. Call (812) 649-9147 or visit LincolnPioneerVillage.com for more information.

Lincoln State Park, Lincoln City, Indiana

This scenic park was established in 1932 as a memorial to Abraham Lincoln's mother, Nancy Hanks. Facilities include Lake Lincoln, paddle boat rental, nature center, cabins, picnic areas, trails, and camp sites. It also includes the Abraham Lincoln Bicentennial Plaza, identifying key milestones in Lincoln's life in Indiana. For reservations, call (812) 937-4710 or (866) 622-6746, or visit in.gov/dnr/parklake/2979.htm.

Ohio River Scenic Byway, Rockport, Grandview & Troy, Indiana

Take a beautiful drive through the southern portion of Spencer County following the picturesque Ohio River through river towns, colorful wooded areas, and vast farmlands. Learn about the history of the area through Ohio River Scenic Byway panels along the way. Call (800) 489-4474 or visit OhioRiverByway.com for more information.



39 North Kringle Place • P.O. Box 202
Santa Claus, IN 47579
(888) 444-9252



CHRISTMAS LAKE GOLF COURSE & EVENTS CENTER

➔ GROUP CONTACT

Manager: Tom Nelson


tnelson@ChristmasLake.com

(877) 962-7465

ChristmasLake.com

Christmas Lake Golf Course
1 Clubhouse Road
P.O. Box 81
Santa Claus, IN 47579

- Open Year Round
- Student Friendly
- Handicap Accessible
- Bus Parking Available

 Allow 4 hours for 18 holes



Tree-lined fairways, rolling hills, valleys, and sparkling lakes

Christmas Lake's 18-hole course was designed in 1967 by renowned golf course architect, Edmund Ault. Even Santa Claus, who spends his summers in the town which bears his name, has been seen enjoying a few rounds of golf at Christmas Lake.

➔ GROUP OUTINGS

- Welcomes over 100 groups each year
- Outings may be booked up to one year in advance
- Deposits vary by size of your group and day of the week
- Junior golfers welcome

➔ EVENT CENTER

Host bridal showers, birthdays, anniversaries, company meetings, class reunions, and other events in the spacious event center.

Available Amenities:

- Bartenders
- Catering

- Par 72 championship course features five sets of teeing stations
- 19th Hole Clubhouse on site offers breakfast, lunch, and appetizers
- Meeting facilities accommodate groups from 16 - 130
- Professional assistance in planning and organizing your outing
- Clubhouse available for the perfect banquet



FROSTY'S FUN CENTER

➔ GROUP CONTACT

Owners: Carl & Cindy Somerlott
(812) 544-3338

Frosty's Fun Center
15 Cedar Lane
Santa Claus, IN 47579

- Open Year Round

🕒 Allow 30 minutes - 1 hour

➔ MORE INFO

- Large dining room
- Arcade
- Daily lunch and dinner specials



Food and Games

Frosty's Fun Center offers pizzas, sandwiches, burgers, and wings. **Specialty Pizzas include:**

- | | |
|----------------------|-----------------------|
| • Taco pizza | • BBQ chicken |
| • Bacon cheeseburger | • Buffalo chicken |
| • Greek pizza | • Chicken bacon ranch |
| • Hawaiian pizza | • Alfredo chicken |
| • Insomniac special | • Frosty's loaded |

Ice cream desserts include:

- Chocolate or vanilla soft serve
- Hand-dipped ice cream
- Banana Splits and Sundaes are a classic favorites

A local favorite is the Dirty Frosty Sundae - ice cream, crushed Oreo's®, chocolate syrup, AND gummy worms.



HOLIDAY DRIVE-IN THEATER

GROUP CONTACT

Manager: Georgia Decker


gdecker0023@gmail.com

(812) 649-2857

HolidayDriveIn.com

Holiday Drive-In Theater
644 North Highway 161
Rockport, IN 47625

- **Open April - September**
- Handicap Accessible
- Bus Parking Available

 Allow 5 hours for 2 movies

CONCESSION STANDS

With three concession stands, the popcorn is always flowing. You may also find these other movie munchies:

- Hot dogs
- Hamburgers
- Corn dogs
- French fries
- Nachos
- Soft drinks
- Chocolate and candy bars
- Ice cream bars
- Sno-cones
- And more....

ADMISSION

Admission (for 2 movies):

Adult: \$10.00

Child: \$5.00 (ages 4 - 11)



See the Stars Under the Stars

- Opened its first screen in 1955
- One of the oldest American drive-in theaters still in operation
- Second screen added in 1980
- Third and fourth screens added in 1992
- Fifth screen added in 1996
- Sixth screen added in 2018
- Digital projection
- Three concession stands
- Pet friendly

HOLIDAY WORLD & SPLASHIN' SAFARI

➔ GROUP CONTACT

Group Sales Office

(800) 467-2682

HolidayWorld.com

Holiday World & Splashin' Safari
452 East Christmas Blvd.
Santa Claus, IN 47579

- **Open May - October**
- Student Friendly
- Handicap Accessible
- Bus Parking Available
- Catering Available
- Group discounts for 15+

🕒 Allow 1 - 2+ days

➔ 2019 SPECIAL EVENTS:

Friday Night Fireworks

June 28 - July 26 (Fridays only)

4th of July Fireworks Extravaganza

July 4 - 5

Kids World

August 17 - September 14

(Saturdays & Sundays, except September 8)

Happy Halloween Weekends

September 21 - October 27

(Saturdays & Sundays)

➔ EDUCATIONAL OPPORTUNITIES

- "Performance in the Park," for bands, choirs and dance groups
- "Behind the Scenes Tour"
- "Fun with Physics" program, for high school students



Ready for Launch?

- America's first launched wing coaster, Thunderbird
- TIME Magazine's choice for the #1 wooden roller coaster in the nation - The Voyage
- Splashin' Safari - named the #1 waterpark in the nation by USA Today
- Guinness World Records confirm Mammoth is the World's Longest Water Coaster

Great Value:

- Free Soft Drinks
- Free Sunscreen
- Free Parking
- Free Wi-Fi
- Free Inner Tube Usage

SANTA CLAUS CHRISTMAS STORE

→ GROUP CONTACT

Manager: Julie Korn

Mgr.SCChristmasStore.com@gmail.com

(877) 224-1772

SantaClausChristmasStore.com

Santa Claus Christmas Store
33 North Kringle Place
Santa Claus, IN 47579

- **Open May - December**
- Student Friendly
- Bus Parking Available
- Handicap Accessible

 Allow 1 hour

→ WELCOME BY SANTA

- Jovial welcome as Santa himself boards with the bus with a special greeting; contact manager for availability
- Group photo in front of the store

→ COMPLIMENTARY COUPONS

- Complimentary coupons provided for booked group tours upon request
- Contact manager two weeks prior to group's arrival to receive coupons



Visit with Santa, wander through sparkling lights, and smell the aroma of Mrs. Claus' Sweet Treats

- Christmas gifts, indoor and outdoor lights, Christmas decorations, personalized ornaments, collectibles and more
- Fudge, Bavarian roasted nuts, chocolates, and cookies at Mrs. Claus' Sweet Treats counter
- Visit with Santa during the summer and Christmas seasons
- Free personalization available on nearly 8,000 ornaments from Santa's Ornament Shop
- Christmas brand names include:

*Jim Shore
Precious Moments
Fontanini
Willow Tree
Mr. Christmas
Department 56 Villages and Possible Dreams*

*Ne'Qua Art
Christopher Radko
Old World Christmas
Karen Didion*



SANTA CLAUS MUSEUM & VILLAGE

→ GROUP CONTACT

Director: Nell Hedge


elf@SantaClausMuseum.org

(812) 544-2434

SantaClausMuseum.org

Santa Claus Museum & Village
69 North State Road 245
Santa Claus, IN 47579

- **Open May - December**
- Student Friendly
- Handicap Accessible
- Bus Parking Available

 Allow 30 minutes - 1 hour

→ TOUR PACKAGES

- \$2 per person
- **Special welcome and site orientation, additional \$1 per person
**This service must be booked in advance
- **Special presentation by Mrs. Pat Koch, founder of the Santa Claus Museum & Village, additional flat fee of \$100
**This service must be booked in advance

→ SANTA'S ELVES

- A group of generous volunteers donate their time to answer the thousands of letters from children to Santa each year
- In 2018, around 200 Elves answered approximately 22,000 letters
- Write to Santa:
Santa Claus
P. O. Box 1
Santa Claus, IN 47579



**“We help Santa
keep the magic of the season alive.”**

- Nell Hedge - Santa Claus Museum & Village, Director

The Santa Claus Museum opened in May 2006 and moved to its current location adjacent to the 1935 Santa Claus Statue in 2011. In 2012, the Santa Claus Church and Original Santa Claus Post Office were moved to the site, creating the Santa Claus Museum & Village.

Explore the story of Santa Claus, Indiana, featuring:

- History behind the famous Santa Claus Post Office
- Santa Claus Land artifacts
- Letters to Santa from children dating back to the 1930s
- Historic 1880s Santa Claus Church
- Original 1856 Santa Claus Post Office
- Write a free letter to Santa to receive a response from Santa and Santa's Elves
- Gift shop includes clothing, souvenirs, and locally made merchandise
- 22-foot-tall Santa Claus Statue, built in 1935



SANTA CLAUS POST OFFICE

→ GROUP CONTACT

Postmaster: Marian Balbach

Marian.I.balbach@usps.gov

(812) 937-4469

Santa Claus Postmaster
45 North Kringle Place
Santa Claus, IN 47579

- Free Admission
- Student Friendly
- Handicap Accessible
- Bus Parking Available

⌚ Allow 15 minutes

→ HOLIDAY POSTMARK GUIDELINES

- Allow at least a 2-inch by 4-inch space in the stamp area for the picture postmark
- Apply postage to cards or letters before bringing or mailing them to the post office
- The picture postmark is available on working days between December 1 and 24
- The picture postmark must be requested by the postal customer; To ensure a good postmark imprint, do not enclose large or bulky items in your holiday mail (Ex: reindeer food, snowflakes, glitter, stickers, etc.)
- No charge for postmarking; however, there is a limit of 50 picture postmarks (hand cancellations) per person per day

→ HOURS

Monday - Friday:

9:00 am - 12:30 pm and

1:30 - 4:00 pm

Saturday: 9:30 - 11:30 am

Closed on holidays.



“The Santa Claus holiday postmark has become the most popular in the nation over the past two decades.”

— Postmaster Marian Balbach

- Established in 1856 with John Specht appointed as its first postmaster
- Only post office in the world with Santa’s name
- In 1914, Postmaster James Martin began responding to children’s letters to Santa
- Current location is in Kringle Place Shopping Center
- Receives over 400,000 pieces of mail during the holidays
- Special picture postmark began in 1983
- Designed by a local high school student, the postmark is unique each year and can only be received at the Santa Claus Post Office

SANTA'S CANDY CASTLE

➔ GROUP CONTACT

Owner: Kevin Klosowski

kevin@SantasCandyCastle.com

(800) 356-1935

SantasCandyCastle.com

Santa's Candy Castle
15499 North State Road 245
Santa Claus, IN 47579

- **Open May - December**
- Free Admission
- Student Friendly
- Handicap Accessible
- Bus Parking Available

🕒 Allow 30 minutes - 1 hour



"Don't leave without trying the frozen hot chocolate."

- St. Louis Post-Dispatch

➔ 2019 SPECIAL EVENTS

- **Chestnuts Roasting on an Open Fire**
Saturdays Nov. 30 - Dec. 21

➔ GOURMET CONFECTIONS

- Fudge
- Turtles
- Divinity
- Toffee
- Caramels
- Peanut brittle

The castle was dedicated in 1935 as part of the nation's first themed attraction, called "Santa Claus Town." It was created to entertain visitors who began arriving after Robert Ripley featured the town in his famous Believe it or Not cartoon.

Originally sponsored by Curtiss Candy, creators of the Baby Ruth and Butterfinger candy bars, the restored castle blends historic charm with a modern twist to offer a unique experience unlike any other. Highlights of the castle's offerings include:

- The North Pole Network
- Interactive candy machines
- Old-fashioned candy
- Handmade confections
- Over 30 flavors of hot chocolate
- Frozen hot chocolate
(as featured on *Man vs. Food*)



SANTA'S STABLES

➔ GROUP CONTACT

Owners: **Kenny & Kelly Jones**

riding@Santas-Stables.com

(812) 340-2288


Santas-Stables.com

Santa's Stables

6709 East County Road 1475 North

Lamar, IN 47550

- **Open April - October**
- Handicap Accessible
- Bus Parking Available

 Allow 30 minutes - 1 hour

➔ GROUP OUTINGS

- Corporate retreats, church activities, birthday parties
- Reservations are not required but are recommended
- The pony rides presented on a first come, first serve basis
- Call for pricing and details

➔ FEATURES

- No weight limit
- Special needs riders accommodated
- Must be 5 years old to go on the trail ride



Visit Santa's Stables for a family-friendly horseback riding experience

- Family-friendly horseback riding
- Led by skilled horseback guides
- Wooded surroundings with multiple quaint trails

| MARCH | | | | | | | APRIL | | | | | | | MAY | | | | | | | JUNE | | | | | | |
|-------|----|----|----|----|----|----|-------|----|----|----|----|----|----|-----|----|----|----|----|----|----|------|----|----|----|----|----|----|
| S | M | T | W | Th | F | S | S | M | T | W | Th | F | S | S | M | T | W | Th | F | S | S | M | T | W | Th | F | S |
| 1 | 2 | 3 | 4 | 5 | 6 | 7 | 1 | 2 | 3 | 4 | 5 | 6 | 7 | 1 | 2 | 3 | 4 | 5 | 6 | 7 | 1 | 2 | 3 | 4 | 5 | 6 | 7 |
| 8 | 9 | 10 | 11 | 12 | 13 | 14 | 8 | 9 | 10 | 11 | 12 | 13 | 14 | 8 | 9 | 10 | 11 | 12 | 13 | 14 | 8 | 9 | 10 | 11 | 12 | 13 | 14 |
| 15 | 16 | 17 | 18 | 19 | 20 | 21 | 15 | 16 | 17 | 18 | 19 | 20 | 21 | 15 | 16 | 17 | 18 | 19 | 20 | 21 | 15 | 16 | 17 | 18 | 19 | 20 | 21 |
| 22 | 23 | 24 | 25 | 26 | 27 | 28 | 22 | 23 | 24 | 25 | 26 | 27 | 28 | 22 | 23 | 24 | 25 | 26 | 27 | 28 | 22 | 23 | 24 | 25 | 26 | 27 | 28 |
| 29 | 30 | 31 | | | | | 29 | 30 | 31 | | | | | 29 | 30 | 31 | | | | | 29 | 30 | 31 | | | | |
| | | | | | | | | | | | | | | | | | | | | | | | | | | | |

| JULY | | | | | | | AUGUST | | | | | | | SEPTEMBER | | | | | | | OCTOBER | | | | | | |
|------|----|----|----|----|----|----|--------|----|----|----|----|----|----|-----------|----|----|----|----|----|----|---------|----|----|----|----|----|----|
| S | M | T | W | Th | F | S | S | M | T | W | Th | F | S | S | M | T | W | Th | F | S | S | M | T | W | Th | F | S |
| 1 | 2 | 3 | 4 | 5 | 6 | 7 | 1 | 2 | 3 | 4 | 5 | 6 | 7 | 1 | 2 | 3 | 4 | 5 | 6 | 7 | 1 | 2 | 3 | 4 | 5 | 6 | 7 |
| 8 | 9 | 10 | 11 | 12 | 13 | 14 | 8 | 9 | 10 | 11 | 12 | 13 | 14 | 8 | 9 | 10 | 11 | 12 | 13 | 14 | 8 | 9 | 10 | 11 | 12 | 13 | 14 |
| 15 | 16 | 17 | 18 | 19 | 20 | 21 | 15 | 16 | 17 | 18 | 19 | 20 | 21 | 15 | 16 | 17 | 18 | 19 | 20 | 21 | 15 | 16 | 17 | 18 | 19 | 20 | 21 |
| 22 | 23 | 24 | 25 | 26 | 27 | 28 | 22 | 23 | 24 | 25 | 26 | 27 | 28 | 22 | 23 | 24 | 25 | 26 | 27 | 28 | 22 | 23 | 24 | 25 | 26 | 27 | 28 |
| 29 | 30 | 31 | | | | | 29 | 30 | 31 | | | | | 29 | 30 | 31 | | | | | 29 | 30 | 31 | | | | |
| | | | | | | | | | | | | | | | | | | | | | | | | | | | |

| | | | |
|------|-----------|--|-----------|
| 2019 | -CLOSED- | 9AM - 5PM | 9AM - 6PM |
| | 9AM - 7PM | Days in WHITE, call at least 2 days in advance to check for availability | |



Days in white - Call at least 2 days in advance for availability.

COLONEL JONES HOME

GROUP CONTACT

Lincoln State Park Naturalist:

Michael Crews


mcrews@dnr.in.gov

(812) 937-1979

in.gov/dnr/parklake/2979.htm

Colonel Jones Home
620 East County Road 1575 North
Gentryville, IN 47537

- Student Friendly
- Bus Parking Available

 Allow 30 minutes - 1 hour

TOURS

- Appointment required for group tours
- Fee is \$2 per person

INTERESTING FACTS

- Lincoln slept here in 1844 while campaigning for Henry Clay
- Abe worked for Colonel Jones as a common farm hand at a dollar a day
- Colonel Jones was killed at the Battle of Atlanta in 1864



Restoring and Preserving History

- Carefully restored 1834 Federal-design home of Abraham Lincoln's merchant employer
- Offers a look at the early development of Indiana and the life of Colonel William Jones
- Guided tours, themed talks, and exhibits
- Situated on 100 acres of forest
- Picnic area
- Restored log barn

Colonel Jones Home is located one mile west of Highway 62 on Boone Street in Gentryville. An appointment is required for home tours. This site is owned and operated by Lincoln State Park.

LINCOLN AMPHITHEATRE

GROUP CONTACT

Director: Marc Steczyk

MSteczyk@visitindiana.com

(812) 937-2329

LincolnAmphitheatre.com

Lincoln Amphitheatre
15032 North County Road 300 East
Lincoln City, IN 47552

- 2019 shows run May - October
- Handicap Accessible
- Bus Parking Available

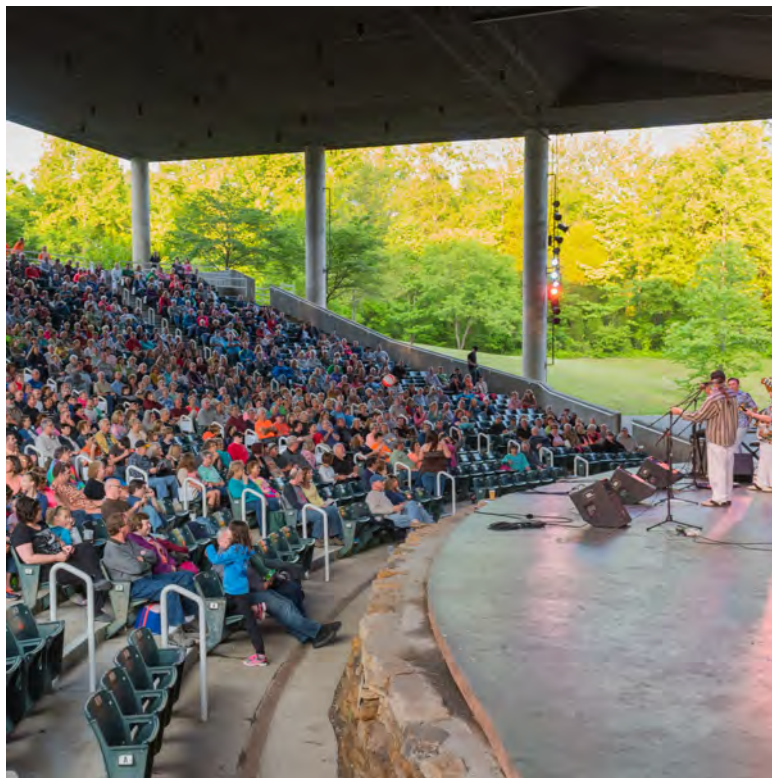
 Allow 3 hours

GROUP SALES

- Group discounts are available
- Call 1-844-205-4ABE
or email MSteczyk@visitindiana.com for more information

"HERE I GREW UP"

Here I Grew Up, a brand new original musical production, celebrates Abraham Lincoln and the community that helped shape his character. This honest and emotionally charged story of Lincoln's time in southern Indiana honors the pioneers who played an integral part in his formative years, helping to nurture his work ethic and desire to learn. With all new songs, lively dances, and a unique perspective on Lincoln's life, *Here I Grew Up* is certain to entertain your whole family!



2019 Performance Series:

| | |
|----------------------------------|--|
| May 18 | Departure: A Journey Tribute Band |
| June 1 | Molly Hatchet |
| June 15 | Toys in the Attic: A Tribute to Aerosmith |
| June 28-29 and July 11-13 | Here I Grew Up |
| July 27 | Purple Veins: A Tribute to Prince |
| August 10 | Ben & Noel Haggard |
| August 24 | John Waite |
| August 31 | Celebrate the Sounds of the Summer of '69 |
| September 7 | Evansville Philharmonic Orchestra |
| September 28 | Hard Day's Night: a Tribute to the Beatles |
| October 12 | "Ghostbusters" Movie Night at the Amphitheatre |

[Visit IndianasAbeLincoln.org/Events](http://VisitIndianasAbeLincoln.org/Events) for details.

LINCOLN BOYHOOD NATIONAL MEMORIAL

GROUP CONTACT

Chief of Interpretation: Mike Capps


mike_capps@nps.gov

(812) 937-4541

[NPS.gov/LIBO](https://www.nps.gov/LIBO)

Lincoln Boyhood National Memorial
3027 East South Street
Lincoln City, IN 47552

- Student Friendly
- Handicap Accessible
- Bus Parking Available

 Allow 1 - 2 hours

TOUR FEATURES

- 15-minute orientation film, "Forging Greatness: Lincoln in Indiana."
- 15-minute ranger-led tour of the Memorial Visitor Center
- 15 minutes to visit the bookstore and restrooms
- One-mile walk to the Living Historical Farm



**... you can not fail,
if you resolutely determine,
that you will not.**

- July 22, 1860 (Letter to George Latham)

Abraham Lincoln spent fourteen of the most formative years of his life and grew from youth into manhood (1816-1830) on this southern Indiana soil. Many of the character traits and moral values that made Abraham one of the world's most respected leaders were formed and nurtured here. The gravesite of his mother, Nancy Hanks Lincoln, may be found in the park.

- Visit the site where Abraham Lincoln spent his childhood
- Memorial Visitor Center
 - 15-minute orientation film:
"Forging Greatness: Lincoln in Indiana"
 - Bookstore
- Lincoln Living Historical Farm
- Four trails to explore
- Bus parking available



LINCOLN PIONEER VILLAGE & MUSEUM

GROUP CONTACT

Contact: Nancy Kaiser


lpvdirector@gmail.com

(812) 649-9147

LincolnPioneerVillage.com

Lincoln Pioneer Village
928 Fairground Drive
Rockport, IN 47635

- **Open daily May - October**
Mon. - Sat. 9:00 am - 4:00 pm
Sun. 12:00 - 4:00 pm
- Off season by chance or appointment
- Student Friendly
- Museum is Handicap Accessible
- Bus Parking Available

 Allow 30 minutes - 1 hour

TOUR FEATURES

- Pre-arrange your tour to have historical re-enactors on site
- Learn about Lincoln's roots during a guided tour of the museum
- Purchase souvenirs
- Scenic grounds provide space for your picnic or catered lunch

2019 SPECIAL EVENTS

May 11, 2019

Spring Heritage Day Rendezvous

July 6, 2019

Abraham Lincoln Bicentennial Freedom Festival

October 26, 2019

Fall Heritage Day Rendezvous

December 7, 2019

"Tremendous" Christmas in the Village



**Here is where greatness was forged,
in the wilderness of the Indiana frontier**

- 13 Lincoln-era replica cabins in memorial to Abraham Lincoln's years spent in Spencer County
- Museum housing hundreds of fascinating artifacts from the area's historic past, including: a hutch made by Abraham Lincoln, with the help of his father Thomas, a 1598 "Breeches" Bible, and a rare Rocker "Beater" loom, one of 66 known to exist

Step back in time as you visit these cabins:

- John Pitcher's Law Office
- Daniel Grass Home
- Jones Store
- Lincoln Homestead Cabin
- Gentry Mansion
- Josiah Crawford Home
- Old Pigeon Baptist Church
- Browns Inn
- Azel Dorsey Home
- Block House
- Pioneer Schoolhouse
- Transportation Building



LINCOLN STATE PARK

GROUP CONTACT

Property Manager: Brad Young


byoung@dnr.in.gov

(812) 937-4710

IN.gov/dnr/parklake/2979

Lincoln State Park
15476 North County Road 300 East
Lincoln City, IN 45552

- Student Friendly
- Handicap Accessible
- Bus Parking Available

 Allow 1 - 2 hours

TOUR FEATURES

- One-hour tour consists of a naturalist-led talk and tour of the Abraham Lincoln Bicentennial Plaza and Nature Center
- \$2 per person for passenger vans, school buses, motor coaches, commercial buses, without a scheduled tour or program
- \$1 per person for passenger vans, school buses, motor coaches, commercial buses, with program reservations

CAMPING

Pine Hills Cottages accommodate 6, 12, and 16 people. Does not include kitchen facilities or restrooms.

Pine Hills Group Camp consists of 15 cottages plus the Dining Hall.



Walk on the same grounds that Abe once walked as a young boy

Lincoln State Park is a 2,026-acre park that was established in 1932 as a memorial to Nancy Hanks Lincoln. Facilities include the 58-acre Lake Lincoln, camp sites, paddle boat and kayak rental, nature center, cabins, cottages, and picnic areas. Miles of hiking trails are available and are rated easy to moderate in difficulty.

- Six hiking trails to explore
- Lincoln Bicentennial Plaza, celebrating Lincoln's 200th birthday
- Nature Center, featuring interactive exhibits for the entire family
- Lake Lincoln, offering a beach area, swimming, canoe, paddleboat, and rowboat rentals
- Sleep among the trees in the lakeside campground, log cabins, or group cottages
- Visit the General Store to purchase any forgotten camping supplies
- Picnicking and shelter areas
- Interpretive Naturalist Services

MONKEY HOLLOW WINERY AND DISTILLERY

GROUP CONTACT

Co-Owners: Jamie Zellers and Faye Hedinger


info@MonkeyHollowWinery.com

(812) 357-2272

MonkeyHollowWinery.com

Monkey Hollow Winery
11534 East County Road 1740 North
St. Meinrad, IN 47577

- **Open Tuesday - Sunday**
- Handicap Accessible
- Bus Parking Available

 Allow 1 - 2 hours

TOUR FEATURES

- Call ahead for special meat and cheese platters
- Live entertainment may be arranged in advance
- Purchase artisan gifts and locally made food

WINE SAMPLES MAY INCLUDE

Dry

Combined Dry White
2014 Chambourcin
Combined dry red

Semi Sweet/Semi Dry

Traminette
Chambourcin Rose'
Pasture Limit 2
Ol' Grandad

Sweet Wine

2014 Vignoles
Pasture White
Pasture Red

Fruit Wines

Blackberry
Blueberry
Elderberry
Cherry
Peach
Strawberry
Cranberry

Seasonal

Spiced apple
Winter Warmer

Monkey Shine, also
available in tasting room



**"Our host was not only knowledgeable,
but she was excellent at figuring out
just what sort of wine would strike a person
as enjoyable."**

- Little Indiana

- Complimentary wine samples
- Monkey Shine and other distilled spirits
- Picnic friendly
- Live music Saturdays June - August
- Featured on Hoosier Wine Trail
- Meat, cheese, and crackers are available for purchase
- Call ahead for groups
- Private room available for reunions or parties

PEPPER'S RIDGE WINERY

GROUP CONTACT

Owner: Kevin DeWeese


peppersridge@gmail.com

(812) 649-9463 (WINE)

PeppersRidge.com

Pepper's Ridge Winery
4304 North County Road 200 West
Rockport, IN 47635

- **Open Wednesday - Sunday**
- Handicap Accessible
- Bus Parking Available

 Allow 1 - 2 hours

FEATURES

- Call ahead for special meat and cheese platters
- Live entertainment may be arranged in advance
- Purchase artisan gifts and locally made food

WINE SAMPLES MAY INCLUDE

Dry

Small Town White
Bluff City White
Hoosier Red
Bluff City Red

Semi-Dry

Hoosier White
Cowboy Up Red
Plum
Small Town White
Lock & Load
Cranberry
Hoosier Sweetie

Semi-Sweet

Small Town Red
Knob Hill Quencher
30.06 Red
Trail Mix
Elderberry
Blackberry
Bird Dog Blues
Lakeview Peach
Cowboy Up White

Sweet

Blueberry
Strawberry
Raspberry
Cherry



**"The lovely family atmosphere
and their eagerness to please their guests
make it a great choice."**

- Only In Your State

- Featured on the Hoosier Wine Trail
- Situated on a quiet country road near Rockport, Indiana
- Minutes away from the Ohio River Scenic Byway
- Complimentary tastings are offered
- Bus parking available
- Steckler Grassfed cheese
- Oberle cheese & sausage
- Tell City Pretzels

SAINT MEINRAD ARCHABBEY

GROUP CONTACT

Guest Services


GuestServices@SaintMeinrad.edu

(800) 581-6905

SaintMeinrad.org

Saint Meinrad Archabbey
200 Hill Drive
Saint Meinrad, IN 47577

- Student Friendly
- Handicap Accessible
- Bus Parking Available

 Allow 1 - 1.5 hours

TOUR FEATURES

- Guided tours of the Archabbey are available on Saturdays at 1:30 pm
- Self-guided walking tours are also available
- Group tours can be arranged with advance notice. Typical visits last one hour and thirty minutes

SAINT MEINRAD ARCHABBEY GIFT SHOP

- Gift shop features one of the largest selections of inspirational gifts including Bibles, books, music, and DVDs
- Unique selection of gifts to commemorate important occasions
- Featuring foods and gifts handcrafted at Saint Meinrad and other monasteries



"All guests who present themselves are to be welcomed as Christ"

- Founded in 1854, the Saint Meinrad Archabbey is one of only two archabbeyes in the United States and one of 11 in the world
- More than 80 monks of this Benedictine community still live by the Rule of St. Benedict
- The monks operate a Seminary and School of Theology, offering education and formation for priests, permanent deacons and lay ministers for the Roman Catholic Church
- The public is welcome to attend Mass and Liturgy of the Hours in the Archabbey Church

Liturgy of the Hours times are: 5:30 am, 12:00 pm, 5:00 pm, and 7:00 pm, Monday - Saturday and 7:15 am, 12:00 pm, 5:00 pm, and 7:00 pm on Sunday

Mass is 7:30 am Monday - Saturday; 9:30 am Sunday and feast days

- Rosary pilgrimages are held each Sunday at 2:00 pm during May and October at **Monte Cassino Shrine**, about a mile east of the Archabbey. Mass is celebrated on Saturdays at 8:00 am (Nov. - Apr.), and 7:00 am (May - Oct.)

DR. TED'S MUSICAL MARVELS

GROUP CONTACT

Owner: Dr. Ted Wafart

mmarvels@psci.net

(812) 937-4250

DrTeds.com

Dr. Ted's Musical Marvels
11896 S US Highway 231
Dale, IN 47523

- Open for Groups of 15+
- Handicap Accessible
- Bus Parking Available



Allow 1 - 2 hours

TOURS

- **2019 rate:** \$7/ per person
- Self-playing music machines demonstrated by tour guides
- Sing and dance to music from around the world
- Shop the unique gift shop

DR. TED'S MUSICAL MARVELS GIFT SHOP

- Collectables of all kinds, for all ages, interests, and price ranges



"I would like to have been around back when people were awed by the first cars and airplanes. That wonder is lost in today's society which is glutted with technology."

- Dr. Ted Wafart

- Amazing collection of mechanical musical instruments
- Collection of hard-to-find mechanical tin toys of yesteryear
- Carousel horses
- Call ahead to book a group tour



LOCAL SHOPPING

ANTIQUÉ SHAK

(812) 937-2533

Old Highway 231

Gentryville, IN 47537

Browse a diverse selection of antiques from near and far.



- Bus Parking Available

DARLENA'S HOLIDAY AND GIFT SHOPPE

(812) 649-9755

422 Jefferson Street

Rockport, IN 47635

Darlena's is filled with home decor, custom wreaths, and holiday items for the entire family.



- Handicap Accessible
- Bus Parking Available

EVERGREEN BOUTIQUE & CHRISTMAS SHOP

ShopEvergreenBoutique.com

(812) 937-4600

8 Kringle Place

Santa Claus, IN 47579

A wonderful place to find women's boutique clothing and accessories, special Santa Claus, Indiana, souvenirs, and gorgeous Christmas furnishing and gifts. Find your name on the personalized name tree or let the shop personalize an ornament for you for free!



- Handicap Accessible
- Bus Parking Available

LOCAL SHOPPING

LAKEVIEW ORCHARD

(812) 649-2753

2315 North Orchard Road

Rockport, IN 47635

A local, family-owned orchard near Rockport, Indiana, known for juicy peaches, giant pumpkins, tasty apple cider, and more. Nearby, Pepper's Ridge Winery uses Lakeview peaches to make their sweet peach wine.



- Handicap Accessible

PUMPKINS AND MORE FARM MARKET

PumpkinsAndMoreMarket.com

(812) 686-2863

8641 East County Road 1720 North

Ferdinand, IN 47532

Check out the wide variety of homegrown and homemade goodies throughout the year at Pumpkins and More. Edible items for sale include aquaponic-grown vegetables, frozen meats, eggs, cheeses, jellies & jams, fruits, and other treats. In addition, you will find candles, wooden crafts, potted plants, and other locally made items.



- Handicap Accessible
- Bus Parking Available

RAYELLE COLLECTION

RayelleCollection.com

(812) 937-6700

100 North Louis J. Koch Blvd.

Santa Claus, IN 47579

Women's boutique carrying chic and timeless clothing, shoes, intimates, and jewelry. Every piece is hand selected by the owner and clothing sizes are available in small through 3XL.



- Handicap Accessible

LOCAL SHOPPING

RICE 'N RIBBON

(812) 649-5041

415 Main Street

Rockport, IN 47635

Gift and Bridal Shop full of special treasures for you and your family.



- Handicap Accessible
- Bus Parking Available

SAINT MEINRAD ARCHABBEY GIFT SHOP

SMAGiftShop.com

(812) 357-8290

State Road 545

St. Meinrad, IN 47577

This gift shop features one of the largest selections of inspirational gifts including Bibles, books, music, and DVDs.



- Handicap Accessible
- Bus Parking Available

SANTA CLAUS CHRISTMAS STORE

SantaClausChristmasStore.com

(877) 224-1772

33 North Kringle Place

Santa Claus, IN 47579

Enjoy shopping at the gigantic Santa Claus Christmas Store, featuring Christmas gifts, decorations, hundreds of collectibles, fudge and other sweet treats, and so much more. Visit with Santa during the summer and Christmas seasons.



- Handicap Accessible
- Bus Parking Available

LOCAL SHOPPING

SANTA CLAUS HARDWARE

SantaClausHardware.com

(812) 937-2048

23 North Louis J. Koch Blvd.

Santa Claus, IN 47579

Stop in for camping accessories, bicycle rental, fishing and grilling supplies, and propane fill/exchange. Browse more than 60,000 products, and utilize services such as key cutting, copy/fax, and more.



- Handicap Accessible

SANTA'S TOYS

SantasToys.com

(812) 937-5060

3 North Kringle Place

Santa Claus, IN 47579

Browse through over 2,800 specialty toys at Santa's Toys. Guests of all ages are encouraged to find their inner child and play while browsing. The selection includes STEM products that encourage learning through play.



- Handicap Accessible
- Bus Parking Available

STECKLER GRASSFED FARM

StecklerGrassfedFarms.com

(812) 683-3098

21477 North County Road 600 East

Dale, IN 47523

Near Dale, families can visit a family owned, pasture-based, certified organic farm right here in southern Indiana. The farm produces raw aged cheese, pastured poultry (eggs, broilers, turkeys), and meats like lamb, beef, and pork that come from 100% grassfed livestock.



- Handicap Accessible

GROUP DINING

THE CHATEAU

(812) 937-4386

6980 E. Highway 62, Mariah Hill, IN 47556

Customize a buffet with home-cooked meat, vegetable, and dessert selections



THE RUSTIC

(812) 649-9258

1375 Old State Highway 45, Rockport, IN 47635

Steak, pasta, sandwiches, and seafood favorites are served in this relaxing atmosphere.



ST. NICK'S RESTAURANT

(812) 937-4359

91 W. Christmas Boulevard, Santa Claus, IN 47579

Catering to groups up to 200, St. Nick's offers a spacious dining area and meals tailored to your groups needs.



OTHER LOCAL DINING



Pizza, Sandwiches, and more!

Frosty's Fun Center

Brick Oven Pizza

Angelo's Pizza

Hoosier Land Pizza & Wings

Jenk's Pizza



Delectable Dessert Options

Try a frozen hot chocolate at Santa's Candy Castle, fudge from the Santa Claus Christmas Store, or a yummy scoop of ice cream at Scoops Ice Cream.

Visit SantaClausInd.com/dining for the full list of dining options.

LAKE RUDOLPH CAMPGROUND & RV RESORT

➔ GROUP CONTACT

Savannah Werne

swerne@suncommunities.com

(877) 478-3657

LakeRudolph.com

Lake Rudolph Campground & RV Resort
78 North Holiday Blvd.
Santa Claus, IN 47579

➔ FEATURING:

Halloween Weekends: Seven weekends in September and October! Enjoy spooktacular Halloween activities including: bonfire ghost stories, trick-or-treating, costume and site decorating contests, Rudy's kid's carnival, frightful film Classics, haunted hayrides, and more. Dance until you drop during the Halloween party, complete with a sound and light show. Participate in family-friendly Halloween activities for everyone ... mummies, daddies, teens and little monsters.

Christmas Packages: Sip hot cocoa in front of the fireplace in your Christmas cabin, participate in Christmas family activities, and have breakfast with Santa!

Santa Claus Land of Lights: Select nights from Thanksgiving night through December 30, experience the *Shining Story of Rudolph* in brilliant LED lights. Visit, SantaClausLandofLights.com for more information.

➔ OPERATING SCHEDULE

2019:

Open May 1 - October 31

First 3 weekends of December (Christmas Packages)



Named a 'Best Family Campground'

- TravelChannel.com

- Located next door to Holiday World
- Features over 534 sites: including vacation rentals (cabins, cottages, & rental RV's), full-hookup RV sites, and tent sites
- Santa's Splashdown WaterPark
- Blitzen Bay Pool
- Free mini golf
- Fishing lake
- Paddleboats & kayaks
- Free Wi-Fi
- Planned activities
- Free Holiday World shuttle
- And much more...



LINCOLN PINES LAKEFRONT RESORT

GROUP CONTACT

Karen Gries

karingries@yahoo.com

(812) 646-7100

StayLincolnPines.com

Lincoln Pines Lakefront Resort
3862 East State Road 162
Lincoln City, IN 47552

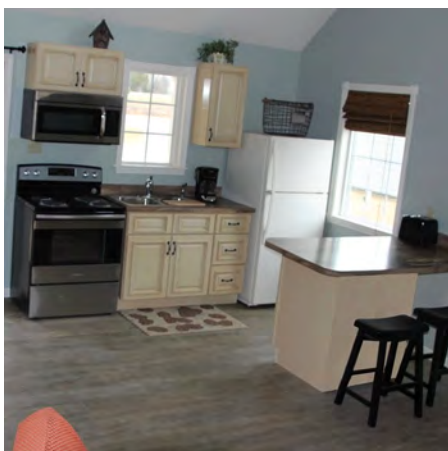
FEATURING:

- Fishing (catch and release)
- Outdoor pool with splash pad
- Tour historic cabin
- Game room includes: shuffleboard table, Pac-Man, arcade games, and more
- Corn hole
- No smoking
- Service animals only
- Basketball court
- Playground
- Lakefront cabins with covered back porch
- Fishing pier
- Shelter house for group picnics



Cabins are named after events in Lincoln's life

- Cabins sleep 6 - 10 guests
- Full kitchen
- Air conditioner / heater
- Televisions in every room
- Free Wi-Fi
- Charcoal grill
- Outdoor porch swing
- Fire pit
- Only 3 miles from Holiday World & Splashin' Safari



MISTLETOE MANOR

➔ GROUP CONTACT

Owners: Matt & Kara Hinshaw

karahinshaw@yahoo.com

(812) 686-3268

vrbo.com/1218855

Mistletoe Manor
15986 Kaspar Drive
Santa Claus, IN 47579



Great spot for multiple families!

➔ FEATURING:

- Kid friendly
- Great for family reunions and small groups
- No smoking allowed
- No pets allowed
- Minimum age limit for renters is 25

- Sleeps up to 21 adults and children comfortably
- Large, two-story home on 9 acres of land
- 6 bedrooms, 3 full baths, 2 half-baths
- 1.5 miles from Holiday World & Splashin' Safari
- 1-acre pond (Catch-and-release fishing)
- Free Wi-Fi
- Linens included
- Central heating and air-conditioning
- Fire pit
- Charcoal grill
- 5 TV's with Dish Network



SAINT MEINRAD ARCHABBEY GUEST HOUSE & RETREAT CENTER

GROUP CONTACT

GuestServices@saintmeinrad.edu

(800) 581-6905

SaintMeinrad.org

Saint Meinrad Archabbey Guest House
200 Hill Drive
St. Meinrad, IN 47577



**"All guests who present themselves
are to be welcomed as Christ"**

- St. Benedict

FEATURING:

- Visitors are welcome to join in prayer or Mass in the Archabbey Church
- Tour beautiful grounds and historic buildings
- Saint Meinrad Gift Shop offers a selection of inspirational gifts, including books, Bibles, music, and DVDs

The Archabbey Guest House and Retreat Center offers overnight accommodations for visitors and those attending retreats.

A quiet environment, beautiful surroundings, and convenient parking will enhance your stay.

- Air-conditioned guest rooms
- Twin beds
- Private bath
- Chapel
- Conference rooms
- Reading rooms
- Dining Room



SANTA'S LAKESIDE COTTAGES

➔ GROUP CONTACT

Owners: Pat & Brenda Arnold

SantasCottages@psci.net

(812) 686-2628

SantasCottages.com

Santa's Lakeside Cottages
1405 West Christmas Blvd.
Santa Claus, IN 47579

➔ FEATURING:

- Elf Park
- Covered shelter house
- Kitchen
- Charcoal grills
- Patio furniture
- Basketball court
- Fishing (catch and release)
- Satellite TVs
- Internet hot spots

➔ OPERATING SCHEDULE

Open April - December



Only 2 miles from Holiday World & Splashin' Safari

- Near Lincoln State Park, Lincoln Boyhood National Memorial, and Holiday World & Splashin' Safari
- One bedroom cottages sleeps up to six
- Two bedrooms cottages sleep up to 10
- Five lakes - fishing is catch and release
- Landscaped pool with a splash pad
- Coin laundry facility
- Reindeer Express Train and zip line
- Two playground areas and large sand box
- Basketball court and tether ball
- Picnic tables
- Fire pits for each cottage

SANTA'S LODGE

➔ GROUP CONTACT

General Manager: Carrie Berg

info@SantasLodge.com

(812) 937-1902

SantasLodge.com

Santa's Lodge
91 West Christmas Blvd.
Santa Claus, IN 47579

Please contact for group discount on block of 10 rooms or more.

➔ FEATURING:

- St. Nick's Restaurant
- Cable/TV
- Whirlpool
- Playground
- Free Wi-Fi
- Laundry facilities
- Shelter house
- Indoor and outdoor pools
- Bungee trampoline
- Ziplines
- Rock wall



Decorated for Christmas 365 days a year

Santa's Lodge opened in June of 1995. The structure was built from the original hand-hewn timbers of a historic barn that stood on the property for more than 100 years (1883). Today, visitors can see the original barn beams that vault 37 feet in the lobby of the hotel. Every day is Christmas when you stay at Santa's Lodge! The beautiful cedar and oak wood creates a natural setting for the antique Christmas decorations including the Canadian horse-drawn sleigh.

- Rooms that will accommodate a family of 4 to 6
- Closest hotel to Holiday World & Splashin' Safari
- St. Nick's Restaurant on site

Meeting / Banquet Facilities

Small Conference Room Upstairs (40 max)
Restaurant Conference Room (60 max)
Celebration Room (300 max banquet style)

Christmas

Enjoy a traditional Christmas Dinner with Santa and much more during the three-weekend Santa Claus Christmas Celebration in December!



SPENCER COUNTY LODGING

Additional Options

BLACKHAWK CREEK VACATION HOME

[Vrbo.com/820222](https://www.vrbo.com/820222)

(812) 661-2236

21293 SR 162

Ferdinand, IN 47532

Renovated farm home nestled in the rolling hills of southern Indiana, near Santa Claus and Ferdinand. This spacious, fully furnished home with satellite TV and Wi-Fi provides a great way to relax with your family, just minutes from Holiday World.

Amenities: 4 bedrooms, 2 bath, sleeps up to 14

Pet Policy: No pets allowed



THE CORNER HOUSE BED & BREAKFAST

[CornerHouseBB.com](https://www.cornerhousebb.com)

(812) 660-0331

3984 North County Road 200 West

Rockport, IN 47635

This country inn is a quick 20-minute drive from Holiday World and offers overnight lodging with breakfast. The three themed guest rooms include private baths, flat-screen TVs with cable, and more. The B&B hosts special events for weddings and receptions. Sleeps up to 10.

Amenities: Hearty country breakfast, close to Pepper's Ridge Winery

Pet Policy: No pets allowed



HOLIDAY GUEST HOUSE SUITES

[Vrbo.com/445793](https://www.vrbo.com/445793)

(812) 630-6594

19260 North State Road 245

Dale, IN 47523

The upstairs unit can sleep up to 7, and the downstairs unit can sleep up to 8. These cozy vacation rentals are located six minutes from Holiday World, the rentals feature spacious kitchens, comfortable sleeping areas, patios, and decks.

Amenities: All linens and towels provided

Pet Policy: No pets allowed



SPENCER COUNTY LODGING

Additional Options

THE HOLIDAY HOUSE VACATION HOME

GoHolidayHouse.com

(812) 686-3268



75 North Holiday Blvd.
Santa Claus, IN 47579

Across the road from Holiday World, the fully furnished vacation home includes two flat screen TVs, free Wi-Fi, and a relaxing patio overlooking the backyard. Sleeps up to 10 guests.

Amenities: Free Wi-Fi, Fire pit, covered patio area, charcoal grill

Pet Policy: No pets allowed



GINGERBREAD HOUSE VACATION RENTAL

SantaClausRefuge.com

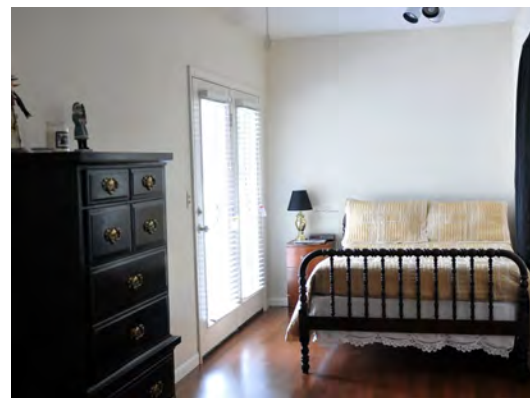
(812) 305-2104

55 North Holiday Blvd.
Santa Claus, IN 47579

The Gingerbread House rental is a fully furnished home, located near the front entrance to Holiday World & Splashin' Safari, in Santa Claus, Indiana. The home sleeps 12 comfortably and is available year round.

Amenities: Free Wi-Fi, fire pit, charcoal grill

Pet Policy: Not suitable for pets



WILMES FARMHOUSE VACATION HOME

Vrbo.com/295928

(812) 630-9101

Wilmes Farmhouse
21674 North 875 East
Ferdinand, IN 47532

Find peace and relaxation in this fully furnished farmhouse, free Wi-Fi, gas grill and fire pit, only 8 miles from Santa Claus. Sleeps up to 14.

Pet Policy: No pets allowed.



SPENCER COUNTY LODGING

Familiar Hotels

BAYMONT INN & SUITES

WyndhamHotels.com/baymont/dale-indiana

(812) 937-7000

1339 North Washington Street

Dale, IN 47523

This family-friendly hotel features an indoor pool and a hot continental breakfast served daily. Located right off I-64, only 12 minutes from Santa Claus, Indiana.

Amenities: Continental breakfast, indoor pool, whirlpool rooms

Pet Policy: No pets allowed



COMFORT INN & SUITES

ComfortInn.com/hotel-rockport-indiana-IN214

(812) 649-2979

1355 North Plaza Drive

Rockport, IN 47635

Located right off Highway 231 near Rockport, the inn offers an indoor pool with a hot tub, fitness center, free Wi-Fi, and a free hot breakfast.

Amenities: Continental breakfast, indoor pool, spa, Wi-Fi, and fitness center

Pet Policy: No pets allowed



MOTEL 6

Motel6.com/en/motels.in.dale.4068

(812) 937-2294

1334 North Washington Street

Dale, IN 47523

Located right off I-64 and only 12 minutes from Santa Claus, Indiana.

This motel includes free Wi-Fi and an outdoor pool.

Amenities: Wi-Fi, outdoor pool, microwave, refrigerator, truck parking

Pet Policy: Pets stay free and must be attended at all times



SANTA CLAUS, INDIANA

[Download Map](#)



SPENCER COUNTY INDIANA

[Download Map](#)

Map Legend

Lincoln Attractions

- 1 Abraham Lincoln Bicentennial Plaza
- 2 Colonel James Home
- 3 Lincoln Amphitheatre
- 4 Lincoln Fairy Park
- 5 Lincoln Landing
- 6 Lincoln Pioneer Village & Museum
- 7 Lincoln State Park
- 8 Lincoln Boyhood National Memorial

Santa Claus Attractions

- 1 Christmas Lake Golf Course
- 2 Evergreen Boutique & Christmas Shop
- 3 Holiday World & Splashin' Safari
- 4 Pumpkins & More Farm Market
- 5 Royale Collection
- 6 Santa Claus Christmas Store
- 7 Santa Claus Hardware Store
- 8 Santa Claus Museum & Village
- 9 Santa Claus Post Office
- 10 Santa's Candy Castle
- 11 Santa's Stables
- 12 Santa's Express Ziplines
- 13 Santa's TOYS


Other Area Attractions


- 1 Antique Shop
- 2 Darlene's Holiday and Gift Shoppe
- 3 Holiday Drive-In
- 4 Kodi-Yak Kayak, Canoe, and Paddleboard Rentals
- 5 Lakeview Orchard
- 6 Monkey Hollow Winery and Distillery
- 7 Ohio River Scenic Byway and Distillery
- 8 Pappert's Ridge Winery
- 9 Rice 'N Ribbon
- 10 The Rustic Golf Course
- 11 Saint Meinrad Archabbey
- 12 Stackler Grassfield

Map Guide


Santa Claus, Indiana, and sites throughout Lincoln's Indiana Boyhood Home are located in the rolling hills of southern Indiana, in Spencer County, Indiana.

The area is known for it's nationally recognized tourist attractions, Holiday World & Splashin' Safari, Lincoln National Boyhood Memorial, and so much more! This destination provides fun for the entire family and is the perfect spot to make memories you'll cherish for a lifetime.






Santa Claus INDIANA



Lincoln's Indiana Boyhood Home

Approximate Travel Distances

| | |
|-------------------------|-------------|
| Evansville, Ind. | 40 min. |
| Louisville, Ky. | 1 hour |
| Bloomington, Ind. | 2 hours |
| Nashville, Tenn. | 2 1/2 hours |
| Indianapolis, Ind. | 3 hours |
| St. Louis, Mo. | 3 hours |
| Cincinnati, Ohio | 3 hours |
| Chicago, Ill. | 5 1/2 hours |



Indiana's Abe Lincoln and Santa Claus, Indiana

last updated january 2019



FAMILY FALL-O-WEEKENDS

Family, Food, Festivals, and Fun,
are the ingredients for a Fabulous Fall!

Visit SantaClausInd.org/Events
for more details.

All Hallows' Eve

- Santa Claus Museum & Village

A lantern-lit reading of Washington Irving's classic ghost story, *The Legend of Sleepy Hollow*, in the historic Santa Claus Church. The Headless Horseman may make an appearance at the end of the story.

Grandview Fall Festival

- Spencer County Fair Grounds

Going on since 1946, this local festival celebrates with a parade, beauty pageants, car show, bluegrass music, cloggers, crafts, and much more.

Friends Fall Frolic

- Lincoln State Park

Pumpkin painting, hayrides, crafts, games, and more, at the campground shelter house.

Fall Heritage Day Rendezvous

- Lincoln Pioneer Village & Museum

The village comes alive with reenactors, period demonstrations, candle making for kids, trunk-or-treating, music, food, a visit with President Lincoln and Young Abe Lincoln, and more.

Kid's Days

- Pumpkins & More Farm Market

Check out the wide variety of homegrown and homemade goodies. During Kids days, join the fun and games including free pumpkin painting, hay rides, pumpkin bowling, and other fun activities.

Halloween Weekends

- Lake Rudolph Campground & RV Resort

Enjoy costume contests, bonfire ghost stories, trick-or-treating, site decorating, and more.



FAMILY FALL-O-WEEKENDS

Family, Food, Festivals, and Fun,
are the ingredients for a Fabulous Fall!

Visit SantaClausInd.org/Events
for more details.



Happy Halloween Weekends

- Holiday World

Experience 12 acres of corn mazes, help Holidog find his candy in Holidog's 3D adventure, chat with the talking pumpkin, Gourdon, join the ghostly barker as he invites you into Carnival Chaos, and watch as popular songs are spookified on stage in Graveyard Smash.

Haunted Church

- Santa Claus Museum & Village

Guided tours will begin at the Original Santa Claus Post Office and continue on a ghostly walk through the historic Santa Claus Church and around the Santa Claus Museum & Village.

Dale Fall Festival

- Dale City Park

Celebrate the 51st Annual Dale Fall Festival, the county's largest street festival with live entertainment, food booths, rides, competitions, and the parade.

Blues on the Rock

- Rockport City Park

Blues on the Rock is a family-friendly music festival featuring live music all day, beer and wine garden, and fun for the whole family.

Mt. Zion Applefest

- AEP Honey Creek Farm

Taste Indiana's largest apple pie, enjoy arts and crafts, food, live entertainment, kids inflatable rides, and more.



Family fun during the first three weekends of December.

Visit SantaClausInd.org/Events
for more details.

Breakfast with Santa

- Historic Santa Claus Campground

All-you-can-eat breakfast will include donut holes, pancakes, and sausage, with coffee, tea, and milk.

Chat with an Elf

- Santa's Candy Castle

Chat with an elf on the North Pole network to find out if you're on Santa's good list.

Chestnuts Roasting on an Open Fire

- Santa's Candy Castle

Roast chestnuts around an open fire during this holiday tradition.

Christmas Dinner with Santa

- Santa's Lodge

Enjoy a buffet-style Christmas dinner with Santa.

Das Nikolaus Festival

- Saint Nicholas Catholic Church

Enjoy German food and a visit by Saint Nicholas.

Face Painting

- Evergreen Boutique & Christmas Shop

Kids can become any character they want to be with Christmas-themed face painting.

Festival of Lights

- Christmas Lake Village

Drive through nine miles of themed residential light displays through the gated community.



Family fun during the first three weekends of December.

Visit SantaClausInd.org/Events
for more details.



Nightmare Before Christmas Golf Scramble

- Christmas Lake Golf Course

The course will be played from the back tees with difficult pin placements to spice up the Christmas season.

Santa Claus Christmas Parade

- Town of Santa Claus

See if you can spot Santa in the annual Santa Claus Christmas Parade as it strolls through the magical town of Santa Claus.

Dancer's Dash 5k

- Town of Santa Claus

Beginning at Yellig Park, and utilizing the new Trails of Santa Claus, the run will make its way through the town and around Holiday World & Splashin' Safari, then back to Yellig Park.

Visit with Santa

- Santa Claus Christmas Store

Share your Christmas wishes and get a photo with Santa.

Santa Claus Arts & Craft Show

- Heritage Hills Middle School
Gymnasium

Shop for special handmade finds and one-of-kind artisan items, from approximately 100 vendors, all under one roof.

Santa Claus Land of Lights

- Lake Rudolph Campground
& RV Resort

Enjoy the Shining Story of Rudolph, told through thousands of LED lights and displays.

Write a Letter to Santa

- Santa Claus Museum & Village

Families are welcome to visit the Santa Claus Museum & Village to write and mail free letters to Santa from the historic Santa Claus Post Office. Letters received by Dec. 20, 2019, will receive a free reply from Santa.



(888) 444-9252

SantaClausInd.org

IndianasAbeLincoln.org

