

What you'll find inside:

Santa Claus, Ind | Lincoln's Boyhood Home | Holiday World & Splashin' Safari



- *Holiday World & Splashin' Safari & other festive favorites*
- *Lincoln history, nature, & small-town charm*
- *Best times to visit, where to eat, stay, & explore*

2026 All-Seasons  Visitor Guide

Santa Claus I·N·D·I·N··

AND MORE!



**START YOUR
JOURNEY!**

Download the app!

SantaClausInd.org

What do **YOU** want from Santa Claus this year?

START YOUR SANTA CLAUS STORY!

A place of magic, heritage, and fun.



Download the app!

Whatever it is, you'll find it in the Santa Claus, Indiana, area... from **Christmas lights** and delights, to **Lincoln's heritage** and **exhilarating family adventures**.

Follow this handy guide and discover what makes this part of Indiana truly a gift.

Contents

PG.06-09



SANTA CLAUS, IND

PG.10-13



LINCOLN'S INDIANA BOYHOOD HOME

PG.14-17



HOLIDAY WORLD & SPLASHIN' SAFARI

PG.18-19



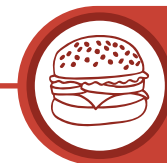
MORE FUN & SEASONAL HAPPENINGS

PG.20-23



PLACES TO STAY

PG.24-25



PLACES TO EAT

SEE BACK



MAP / VISITOR INFO

Get away any way *YOU* want

There are lots of reasons the Santa Claus area should top your family's vacation list. After all, with so many one-of-a-kind experiences all within a short drive, making memories doesn't require a lot of mileage.



First up, **Santa Claus, Indiana**—a town built on endless imagination and wonder, where festive shops, sweet treats, and seasonal celebrations abound.



History buffs of all ages will love **Lincoln's Indiana Boyhood Home**, where you'll walk the land that shaped Abraham Lincoln's early years. Explore historic sites, quiet trails, and stories that still resonate today.

Download the app!



Holiday World & Splashin' Safari is bursting with family fun. This award-winning yet wallet-friendly theme park is known for heart-pumping rides, a massive water park, and exciting shows and concerts.

THE HARDEST PART IS
DECIDING *WHAT TO DO FIRST!*





Stroll as *MERRILY* as you want

Whether you're young—or *young at heart*—the town of Santa Claus has the magic to ignite your festive spirit.

Walk through the **Santa Claus Museum & Village**, where fun exhibits and memorabilia reveal *how the town got its name*. It's never too early to get on the "Big Guy's" list, so kids can even send letters to Santa from here year-round.

Don't forget to visit the **Santa Claus Post Office**, the only one named after him. Drop off a postcard to folks back home with the *iconic Santa Claus postmark* (December only).

Born with a sweet tooth? Stop by **Santa's Candy Castle** for handmade sweets, frozen hot chocolate, and festive decor in a charming castle-like setting. Get that *"tinselly"* feeling as you browse thousands of beautiful ornaments, decorations, and gifts at the **Santa Claus Christmas Store**.



Plan ahead! Make a reservation at **Santa's Reindeer Ranch** and see for yourself what games reindeer really play.

MAKE A WISH LIST FOR YOUR VISIT!

Scan to plan!





Here's our list of things to do in town.
And yes, we checked it twice.

★ FROM CHRISTMAS VIBES TO AWESOME RIDES,
YOU'LL FIND IT ALL HERE!

Christmas Lake Golf Club

ChristmasLakeGolfClub.com
7200 E County Road 1450 N • Santa Claus
(877) 962-7465

Evergreen Boutique & Christmas Shop

ShopEvergreenBoutique.com
8 N Kringle Place • Santa Claus
(812) 937-4600

Holiday World & Splashin' Safari

HolidayWorld.com
452 E Christmas Blvd • Santa Claus
(812) 937-4401

Pumpkins and More Farm Market

PumpkinsAndMoreFarmMarket.com
8641 E County Road 1720 N • Ferdinand
(812) 489-8454

Santa Claus Christmas Store

SantaClausChristmasStore.com
33 N Kringle Place • Santa Claus
(877) 224-1772

Santa Claus Museum & Village

SantaClausMuseum.org
69 State Road 245 • Santa Claus
(812) 544-2434

Santa Claus Post Office

45 N Kringle Place • Santa Claus
(812) 937-4469

Santa's Candy Castle

SantasCandyCastle.com
15499 N State Road 245 • Santa Claus
(800) 356-1935



SANTA CLAUS, IND

Santa's Reindeer Ranch

SantaClausReindeer.com
4178 E County Rd 1700 N • Dale
(812) 632-1851

Santa's TOYS

SantasTOYS.com
3 N Kringle Place • Santa Claus
(812) 937-6050



SEE WHAT'S OPEN!
Scan to plan your trip!





It's easy to see why the region's breathtaking woods, trails, and lakes inspired a young Abraham Lincoln. No doubt it'll have the same effect on your kids.

Find *INSPIRATION* wherever you want



At **Lincoln Boyhood National Memorial**, you'll see where President Lincoln spent his early years and *experience pioneer life and interactive demonstrations* at a living historical farm.

The historical vibes continue at **Lincoln Pioneer Village & Museum**, where quaint Lincoln-era replica cabins showcase early Indiana life through artifacts and exhibits.

Want to do a little pioneering of your own? Hike, camp, or paddle your way through the trails and outdoor activities of **Lincoln State Park**. Experience a revolving array of family-friendly music acts and performances at **Lincoln Amphitheatre**, including a summertime musical drama based on Lincoln's life.

Wherever you go, you'll have a chance to *relax, have fun, and learn history*—and make a little of your own.

LOG ON TO EXPLORE ALL THINGS LINCOLN!

Scan to Plan!





There's **even more to explore** near Lincoln's childhood home. **Honest.**



LINCOLN'S INDIANA BOYHOOD HOME

Colonel Jones Home

620 E County Road 1575 N • Gentryville
(812) 937-1979

Lincoln Amphitheatre

LincolnAmphitheatre.com
15032 E County Road 1500 • Lincoln City
(812) 937-2329

Lincoln Boyhood National Memorial

nps.gov/libo
3027 E South Street • Lincoln City
(812) 937-4541

Lincoln Landing Monument

South of Main Street • Rockport
(812) 649-2242

Lincoln Pioneer Village & Museum

LincolnPioneerVillage.com
928 Fairground Drive • Rockport
(812) 649-9147

Lincoln State Park

bit.ly/lincoln-state-park
15476 N County Road 300 E • Lincoln City
(812) 937-4710

Ohio River Scenic Byway

OhioRiverByway.com
Hwy 66
(800) 489-4474



Scan to plan your trip!



Play as **HAPPILY** as you want



HOLIDAY WORLD &
SPLASHIN' SAFARI

Looking for the *ultimate destination for nonstop family fun?*
Make **Holiday World & Splashin' Safari** your first stop.

*From heart-pounding roller coasters to foot-stomping shows, **Holiday World*** is a family-focused theme park that's as surprisingly affordable as it is thrilling. (Unlimited soft drinks and free sunscreen are nice touches.)

Speaking of SPF, throw on your swimsuits and hit **Splashin' Safari**—a massive, 40-acre water park known for rides like the **Mammoth** water coaster and **ZOOMbabwe** (the world's largest enclosed water slide)!

While the kids zoom through tubes, float the day away in the wave pool or lazy river.

**BECAUSE TRANQUILITY
IS WHERE YOU FIND IT!**



*Make every second of summer count!
Get our free trip planner app.*





Insider Tips!

1. **Grab the best deals at [HolidayWorld.com](https://www.holidayworld.com).**
Children 3 and under get in FREE! Make it a multi-day adventure with discounted Next Day tickets, or 2-day, and 3-day Flex Tickets.
2. **Tuesdays, Wednesdays, and Thursdays are the least busy days to visit.**
3. **You're covered with the Worry-FREE Weather Guarantee.**
If rides close for 90 minutes or longer due to severe weather, keep your ticket to visit again for FREE.
4. **Enjoy FREE soft drinks, parking, and sunscreen.**
No kidding!
5. **The park is cashless for faster service and increased security.**



SCAN
FOR
TICKET INFO,
HOURS,
SPECIAL EVENTS,
AND MORE!



Scan to Plan!



Beverly J Ellen

BeverlyJEllen.florist
812 Sycamore St • Rockport
(812) 660-2791

Chrisney Golf Course

503 E High St • Chrisney
(812) 362-8488

Dale Floral & Gifts

DaleFloral.com
24 S Washington St • Dale
(812) 937-7158

Good Life Designs Painting, Printing, Pottery

GoodLifeDesigns.art
14874 N County Rd 475 E • Lamar
(812) 548-6398

Holiday Drive-In

HolidayDriveIn.com
646 N State Rd 161 • Rockport
(812) 649-2857

Lakeview Orchards

2315 N Orchard Rd • Rockport
(812) 649-2753

Monkey Hollow Winery and Distillery

MonkeyHollowWinery.com
11534 E County Rd 1740 N • St. Meinrad
(812) 357-2272

Pepper's Ridge Winery

PeppersRidge.com
4304 N County Rd 200 W • Rockport
(812) 649-9463

The Rustic Golf Course

1375 South Old State Rd 45 • Rockport
(812) 649-9258

Saint Meinrad Archabbey

SaintMeinrad.org
200 Hill Drive • St. Meinrad
(812) 357-6611

Steckler Grassfed Farms

StecklerGrassfedFarms.com
21477 N County Rd 600 E • Dale
(812) 683-3098



SEASONAL thrills any time you want



MORE FUN &
SEASONAL HAPPENINGS



SUMMER

Beyond the everyday fun, summer comes alive across the area with **live music, entertainment, fireworks,** and the drone show at **Holiday World & Splashin' Safari.**



FALL

Autumn brings **festivals, fairs, and seasonal fun**—highlighted by **Happy Halloween Weekends at Holiday World** and **Halloween Weekends at Sun Outdoors Lake Rudolph.**



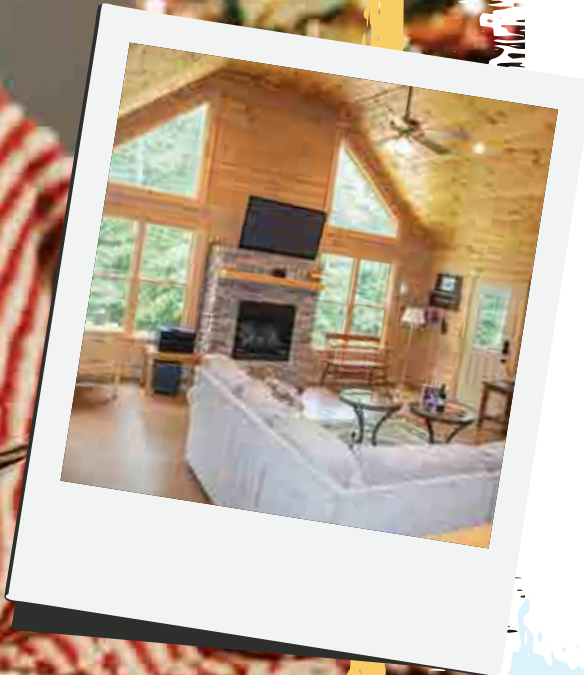
CHRISTMAS

Christmas is our time to shine. Yuletide weekend events include the **Santa Claus Christmas Parade, Santa Claus Land of Lights, Chestnuts Roasting on an Open Fire,** and much more.



Download the App
Scan to Plan!

More *CAN'T-MISS* FUN



PLACES TO STAY

Whether it's camping under the stars or staying in a convenient hotel, you'll find lodging options for every budget, activity, and vacation type.

If you're looking for *quaint and comfy*, consider the **cottages & cabins** throughout the area. Many include amenities like pools, splash pads, playgrounds, and lake access—perfect for slowing down and settling in.

Many vacation rentals *accommodate 10 or more guests*, so you can split the cost with family and friends. With all the comforts you expect, it's truly a home away from home!

For a *quick getaway* or last-minute visit, hotels and motels offer an easy way to stay.



Stay as *COZY* as you want



Scan to Plan!



THE BEST WAY TO FIND A PLACE TO STAY



Some places to check out—
before you **CHECK IN**

COTTAGES, CABINS, & CAMPSITES

Lincoln Pines Lakefront Resort

StayLincolnPines.com
3862 E State Rd 162 • Lincoln City
(812) 646-7100

Lincoln State Park

IN.gov/dnr/parklake/2979.htm
15476 N County Rd 300 E • Lincoln City
(812) 937-4710

Oakridge Campground

OakridgeCampgrounds.com
837 N Silverdale Rd • Rockport
(812) 686-0018

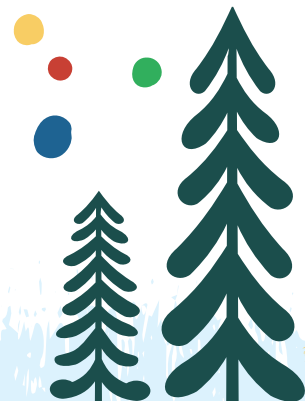
Santa's Cottages

SantasCottages.com
1405 W Christmas Blvd • Santa Claus
(812) 937-5253

Sun Outdoors Lake Rudolph

LakeRudolph.com
78 N Holiday Blvd • Santa Claus
(812) 937-4458

THE BEST WAY TO
FIND A PLACE TO STAY!



Scan to Plan!



HOTELS & MOTELS

Baymont Inn & Suites

bit.ly/baymont-dale
1339 N Washington St • Dale
(812) 937-7000

Locust Hill Motel

815 S State Rd 161 • Rockport
(812) 649-9918

Motel 6

bit.ly/motel6-dale
1334 N Washington St • Dale
(812) 937-2294

Quality Inn & Suites

bit.ly/quality-inn-rockport
1355 N Plaza Dr • Rockport
(812) 250-7126



PLACES TO STAY



Saint Meinrad Archabbey Guest House & Retreat Center

bit.ly/saint-meinrad-guesthouse
200 Hill Dr • St. Meinrad
(800) 581-6905

Santa's Lodge

SantasLodge.com
91 W Christmas Blvd • Santa Claus
(812) 937-1902

Stones Motel

410 S Washington St • Dale
(812) 937-4448





There's something for every **APPETITE!**



PLACES TO EAT



RESTAURANTS

CHRISNEY

Opie's

1 N Main St
(812) 362-7728

GRANDVIEW

Fat Daddy's Grill & Chill

421 Main St
(812) 649-2444

MARIAH HILL

The Chateau

6980 East State Rd 62
(812) 937-4386

ROCKPORT, cont.

The Local Gal & Co.

826 Highway 161

Los Panchos

715 N Fifth St
(812) 649-4137

Riverview Bar & Restaurant

405 N Main St
(930) 258-0563

The Rustic

1375 S Old State Rd 45
(812) 649-9258

Scoops Ice Cream

929 Sycamore St
(812) 649-4255

Sycamore Street Coffee House

819-A Sycamore St
(812) 660-2422

SANTA CLAUS

Annie's Ice Cream & Coffee

21 N Kringle Pl
(812) 937-2311

Fat Santa's Pizza & More

15 S Cedar Ln
(812) 544-3338

Patriot Nutrition

5 E Christmas Blvd

recipe

7200 E County Rd 1450 N
(877) 962-7465, Ext. 2

S&S BBQ & Pizzeria

21 N Kringle Pl
(812) 937-2311

Santa Claus Brewing Co.

41 N Holiday Blvd
(812) 937-2611

Two Sisters Country Store

91 W Christmas Blvd
(812) 686-7500

TROY

New Boston Tavern

11886 N State Rd 545
(812) 547-5539

DALE

Jenk's Pizza

586 S Washington St
(812) 937-2445

Jimador Bar & Grill

560 S Washington St
(812) 937-3775

Sweet P's Frostbite

115 S Washington St
(888) 444-9252

LAMAR

TJ's Tavern

12588 N State Rd 245
(812) 529-8000

LINCOLN CITY

Hoosier Land Pizza & Wings

3804 State Rd 162
(812) 937-2799

RICHLAND CITY

BJ's Pizza

989 N County Rd 600 W
(812) 359-4112

ROCKPORT

Angelo's Pizza

824 Sycamore St
(812) 649-9134

Darlena's Lincolnland Restaurant

518 Jefferson St
(812) 660-5060

FULDA

Louie's Tavern

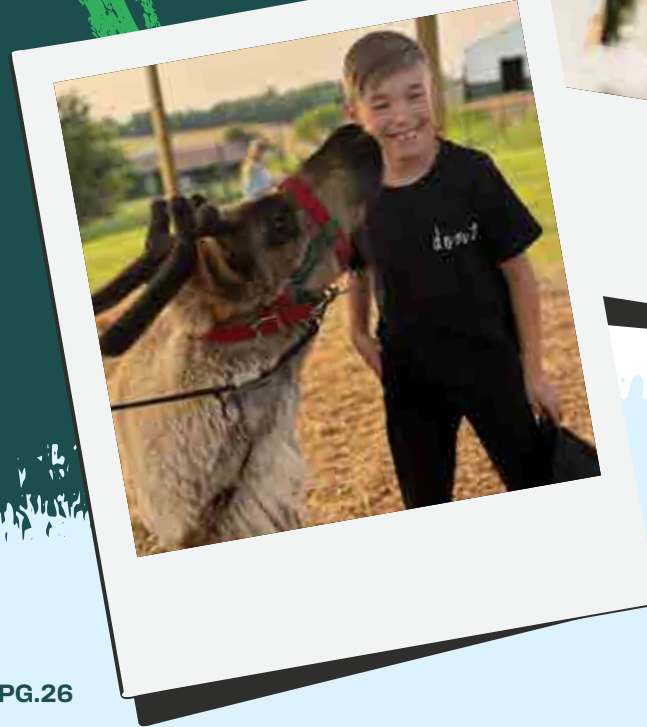
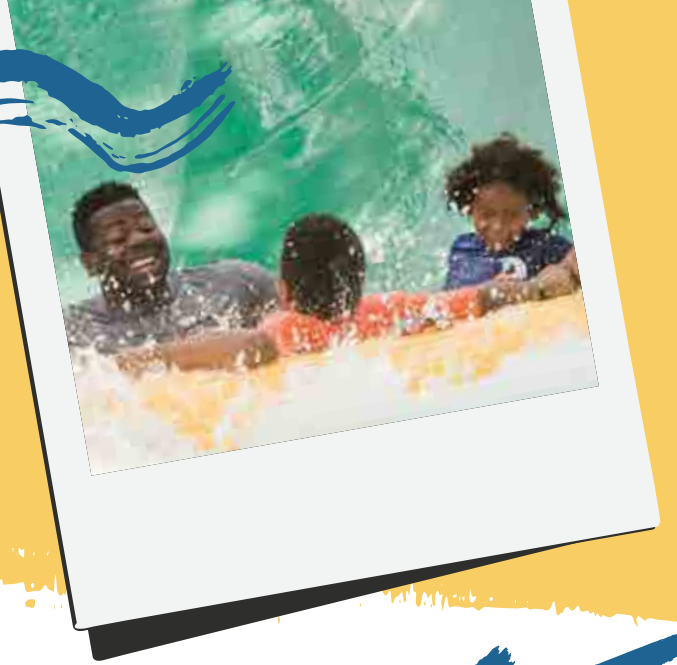
15634 N State Rd 545
(812) 357-5163



ALL THE BEST EATS.
ALL IN ONE APP!



Access restaurant info & menus



Whatever you're wishing for...
YOU'LL FIND IT HERE!



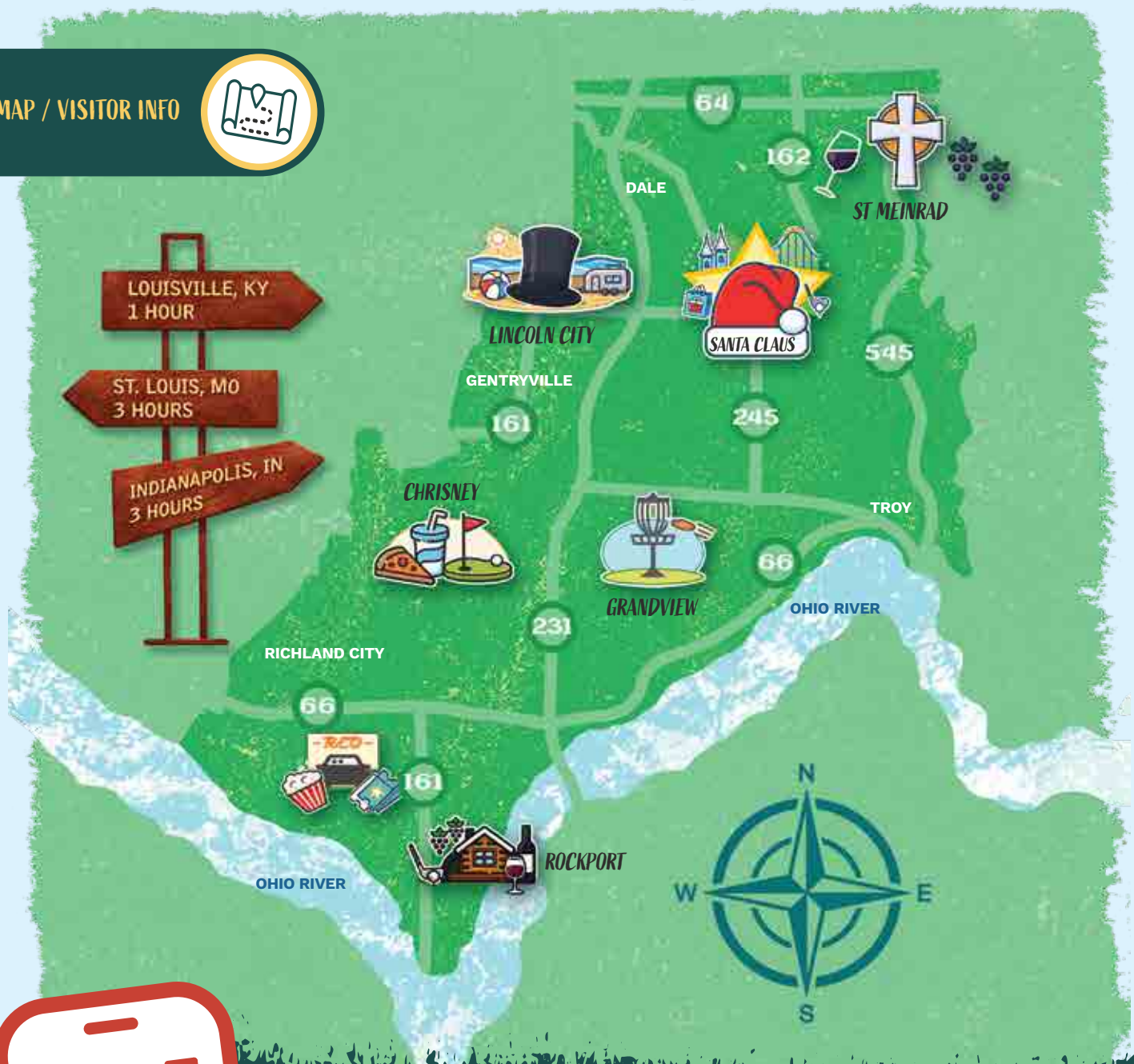
Santa Claus I·N·D·I·N·I·N·I·N·I

AND MORE!

START YOUR SANTA CLAUS STORY!



Download the app!



LOUISVILLE, KY
1 HOUR

ST. LOUIS, MO
3 HOURS

INDIANAPOLIS, IN
3 HOURS



Our trip-planning app makes it easy to find it all—right from your phone.

Explore attractions, restaurants, events, and ready-made tours that help you make the most of every minute in and around **Santa Claus, Indiana.**

Spencer County Visitors Bureau

25 West Christmas Blvd.
Santa Claus, IN 47579
(888) 444-9252
SantaClausInd.org